

Product Line  
Seafood



**QUIRCH**  
FOODS



Distribution • Logistics • Cold Storage

# Shrimp

Shrimp is classified by the count and the number of pieces it takes to equal a pound or a kilo depending on the presentation. The smaller the numbers, the larger the shrimp.



## Black Tiger

*Penaeus monodon*



### FORM

### AVAILABLE SIZES

#### Raw

- ■ Whole 2/4, 4/6, 6/8, 8/12, 13/15, 16/20, 21/25, 26/30, 31/40, 41/50
- ■ Headless 6/8, 8/12, 13/15, 16/20, 21/25, 26/30, 31/40, 41/50
- EZPeel 13/15, 16/20, 21/25, 26/30, 31/40, 41/50, 51/60
- ■ PDTO 8/12, 13/15, 16/20, 21/25, 26/30, 31/40, 41/50, 51/60
- PDTOff 8/12, 13/15, 16/20, 21/25, 26/30, 31/40, 41/50, 51/60
- Butterflied 6/20, 21/25, 26/30, 60/80

#### Cooked

- CPTO 16/20, 21/25, 26/30, 31/40, 41/50, 51/60, 61/70, 71/90
- CPTOff 16/20, 21/25, 26/30, 31/40, 41/50, 51/60, 61/70, 71/90

● IQF ■ BLOCK

## White

Penaeus vannamei / Litopenaeus vannamei



### FORM

### AVAILABLE SIZES

#### Raw

- ■ Whole 13/15, 16/20, 21/25, 26/30, 31/40, 41/50, 51/60, 61/70, 71/90
- ■ Headless U8, 8/12, 13/15, 16/20, 26/30, 31/40, 41/50, 51/60, 61/70, 71/90, 100/200
- EZPeel 13/15, 16/20, 21/25, 26/30, 31/40, 41/50, 51/60
- ■ PDT0 16/20, 21/25, 26/30, 31/40, 41/50, 51/60, 61/70, 71/90
- PDTOff 16/20, 21/25, 26/30, 31/40, 41/50, 51/60, 61/70, 71/90
- Butterflied 16/20, 21/25, 26/30, 60/80

#### Cooked

- CPT0 16/20, 21/25, 26/30, 31/40, 41/50, 51/60, 61/70, 71/90

## Freshwater

Macrobrachium rosenbergii



### FORM

### AVAILABLE SIZES

#### Raw

- ■ Whole 2/4, 4/6, 6/8, 8/12
- ■ Headless 2/4, 4/6, 6/8, 8/12, 13/15, 16/20, 21/25
- EZPeel 2/4, 4/6, 6/8, 8/12, 13/15, 16/20, 21/25

## Pink

Penaeus duorarum / Penaeus brasiliensis



### FORM

### AVAILABLE SIZES

#### Raw

- ■ Headless 13/15, 16/20, 21/25, 26/30, 31/40, 41/50, 51/60



Whole



Headless



EZPeel



PDT0



PDTOff



Butterflied



CPT0



CPTOff

# Crustaceans

Lobster, the tastiest “fish” in the sea, has a mild but distinctive flavor and a firm texture. They come in a variety of sizes, colors and species and considered a delicacy to most seafood enthusiasts.



## Spiny Lobster *Panulirus argus*

- FORM**  
Whole  
Tail  
Head & Body Meat



## Slipper Lobster

*Scyllanoides lateralis*

---

### FORM

Whole

Tail

Body Meat



## Maine Lobster

*Homarus americanus*

---

### FORM

Whole

Tail

Body Meat



## Crawfish

*Procambarus clarkii*

---

### FORM

Whole

Tail Meat



## Snow Crab

*Chionoecetes opilio*

---

### FORM

Clusters

Claws

Meat Combo



## Dungeness Crab

*Metacarcinus magister*

---

### FORM

Whole

Clusters



## Red King Crab

*Paralithodes camtschaticus*

---

### FORM

Legs

Claws

Broilers



# Blue Crab

*Callinectes sapidus*

---

**FORM**

Whole  
Cleaned



# Jonah Crab

*Cancer borealis*

---

**FORM**

Claws



# Soft Shell Crab

*Callinectes sapidus*

---

**FORM**

Whole



# Molluscs

Sweet, succulent scallops; high nutrient oysters; savory garlic butter mussels; steamed garlic, white wine clams; incredible conch ceviche; crunchy and spicy fried calamari are just some of the recipes you can create. A world of flavors awaits you!



## Black Mussels

*Mytilus chilensis*

### FORM

- Cooked Whole
- Cooked Half Shell
- Cooked Meat



## Greenshell Mussels

*Perna canaliculus*

### FORM

- Cooked Half Shell



## Clams

*Meretrix lyrata*

---

### FORM

Whole  
Cooked



## Oysters

*Crassostrea* spp.

---

### FORM

Whole  
Half Shell



## Scallops

*Placopecten magellanicus*

---

### FORM

Dry Meat  
Processed Meat



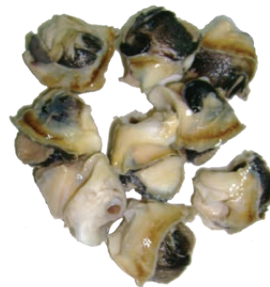
## Whelk Meat

*Thais chocolata*

---

### FORM

Meat



## Conch

*Strombus gigas*

---

### FORM

Meat



## Whole Squid

Loligo spp., Illex argentinus, Todarodes

---

### FORM

Whole  
Round



## Squid Tubes

Loligo spp., Illex argentinus, Todarodes

---

### FORM

Tubes



## Squid Tubes & Tentacles

Loligo spp.,  
Todarodes

---

### FORM

Tubes  
Tentacles



## Squid Rings

Illex argentinus, Todarodes,  
Loligo spp., Dosidicus gigas

---

### FORM

Rings



## Octopus

Octopus vulgaris

---

### FORM

Whole  
Clean  
Cooked  
Ball Type  
Flower Type



## Baby Octopus

Octopus dollfusi, Octopus ocellatus

---

### FORM

Whole  
Clean



## Cuttlefish

Sepia officinalis

---

### FORM

Whole  
Round



## Cut Octopus

Octopus vulgaris

---

### FORM

Pieces  
Cooked





Embrace  
the  
power  
of food

# Fish

When selecting fish you are choosing species, flavor, texture, and available packing. From mild, moderate or full flavor to delicate, medium and firm texture. We offer it all! A wide variety from around the globe.



## Arrowtooth Flounder

*Atheresthes stomias*

### CUTS

Fillets



## Halibut

*Hippoglossus hippoglossus*

### CUTS

Portions  
H&G



## Catfish

*Phreatobius cisternarum*

### CUTS

Fillets  
Nuggets  
H&G



## Turbot

*Psetta maxima*

### CUTS

Fillets



## Tilapia

*Oreochromis niloticus*

---

### CUTS

Fillets  
WGS



## Swai

*Pangasius hypopthalmus*

---

### CUTS

Fillets  
Nuggets  
HGT



## Yellowfin Sole

*Limanda aspera*

---

### CUTS

Fillets  
Whole



## Wahoo

*Acanthocybium solandri*

---

### CUTS

Fillets  
Steaks  
Loins  
WG



## Snapper

*Lutjanus sanguineus*

---

### CUTS

Fillets  
Portions  
WGS



## Snapper

*Lutjanus malabaricus*

---

### CUTS

Fillets  
Portions  
WGS



## Snapper

*Lutjanus campechanus*

---

### CUTS

Fillets  
Portions  
WGS



## Lane Snapper

*Lutjanus synagris*

---

### CUTS

Fillets  
WGS



## Yellowtail Snapper

*Ocyurus chrysurus*

---

### CUTS

Fillets  
WGS



## B-Liner Snapper

*Rhomboplites aurorubens*

---

### CUTS

Fillets  
WGS



## Mahi

*Coryphaena hippurus*

---

### CUTS

Filletts  
Portions  
Steaks  
WG



## Spanish Mackerel

*Scomberomorus maculatus*

---

### CUTS

Steaks  
WG



## Yellowfin Tuna

*Thunnus albacares*

---

### CUTS

Loins  
Portions/Steaks  
Saku  
Poki Cubes



## Pink Salmon

*Oncorhynchus gorbuscha*

---

### CUTS

Filletts  
Portions  
WG  
H&G



## Atlantic Salmon

*Salmo salar*

---

### CUTS

Filletts  
Portions  
WG  
H&G



## Chum Salmon

*Oncorhynchus keta*

---

### CUTS

Filletts  
Portions  
WG  
H&G



## Sockeye Salmon

*Oncorhynchus nerka*

---

### CUTS

Filletts  
Portions  
WG  
H&G



## Steelhead Trout

*Oncorhynchus mykiss*

---

### CUTS

Filletts  
Portions  
WG  
H&G



## Sea Trout

*Salmo trutta*

---

### CUTS

Filletts  
H&G  
HGT



## Grouper

*Epinephelus malabaricus*

---

### CUTS

Filletts/Portions  
H&G  
Whole Round  
WGGs  
Heads



## Herring

*Clupea harengus*

---

### FORM

Fillets  
Whole



## Mackerel

*Scomber scombrus*

---

### FORM

Whole  
WG



## Chilean Sea Bass

*Dissostichus eleginoides*

---

### CUTS

Fillets  
Portions  
H&G



## Whiting

*Merluccius hubbsi*, *Merluccius gayi*

---

### CUTS

Fillets  
Steaks  
H&G  
HGT



## Alaska Pollock

*Theragra chalcogramma*

---

### CUTS

Fillets  
H&G



## Atlantic Cod

*Gadus morhua*

---

### CUTS

Fillets  
Loins  
H&G



## Pacific Cod

*Gadus macrocephalus*

---

### CUTS

Fillets  
Portions  
Loins  
H&G



## Saithe

*Pollachius virens*

---

### CUTS

H&G



## Haddock

*Melanogrammus aeglefinus*

---

### CUTS

Fillets



## Golden Corvina

*Cilus gilberti*

---

### CUTS

Fillets  
Portions  
Steaks  
H&G



## Milkfish

Chanos chanos

---

### FORM

Whole  
Round



## Spanish Mackerel

Scomberomorus spp.

---

### FORM

WG



## Ocean Perch

Sebastes marinus

---

### CUTS

Fillets  
H&G  
HGT



## Red Tilapia

Tilapia rendalli

---

### FORM

WGS



## Parrot Fish

Scarus frenatus

---

### FORM

WGGS



## Mullet

Mugil cephalus

---

### FORM

Whole  
WG



## Croaker

Genyonemus lineatus

---

### FORM

H&G  
HGT



## Butterfish

Peprilus triacanthus

---

### FORM

Whole  
Round



## Blue Runner

Caranx crysos

---

### FORM

WG



## Ribbonfish Largehead Hairtail

Trichiurus lepturus

---

### FORM

Whole





Connecting  
people  
through the  
magic  
of taste.

# Fish Fillets, Portions and Steaks

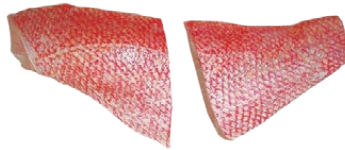


## Snapper

*Lutjanus* spp.



Natural Cut



1- Cut



A- Cut

## Grouper

*Epinephelus* spp.



## Tilapia

*Oreochromis niloticus*



## Catfish

*Phreatobius cisternarum*

---



## Turbot

*Psetta maxima*

---



## Swai

*Pangasius hypopthalmus*

---



## Halibut

*Hippoglossus hippoglossus*

---



## Arrowtooth Flounder

*Atheresthes stomias*

---



## Yellowfin Sole

*Limanda aspera*

---



## Whiting

*Merluccius gayi*

---



## Alaska Pollock

*Theragra chalcogramma*

---



## Haddock

*Melanogrammus aeglefinus*

---



## Atlantic Cod/Pacific Cod

*Gadus morhua*/*Gadus macrocephalus*

---



## Chilean Sea Bass

*Dissostichus eleginoides*

---



## Ocean Perch

*Sebastes marinus*

---



## Golden Corvina

*Cilus gilberti*

---



## Swordfish

*Xiphias gladius*

---



## Wahoo

*Acanthocybium solandri*

---



## Spanish Mackerel

*Scomberomorus* spp.

---



## Mahi

*Coryphaena hippurus*

---



# A Guide to Salmon Cuts

**Salmon**  
Oncorhynchus spp.



## Trim A

Backbone, bellybone off



## Trim D

Trim A, B & C - All belly off, tail piece off, fully trimmed



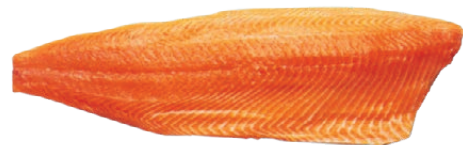
## Trim B

Trim A, back fins off, collar bones off, belly fat and fins off



## Trim E

Trim A, B, C & D Skin off



## Trim C

Trim A & B - Pin bone off



## Loins

Skinless, boneless loins made from an E-trim



**Steelhead Trout**

Oncorhynchus myskiss

---



**Pink Salmon**

Oncorhynchus gorbuscha

---



**Chum Salmon**

Oncorhynchus keta

---



**Atlantic Salmon**

Salmo salar

---



**Sockeye Salmon**

Oncorhynchus nerka

---



# A Guide to Tuna Cuts

**Yellowfin Tuna**  
Thunnus albacares



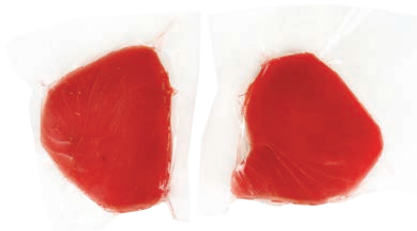
**Full Loins**



**Center Cut Loins**



**Steaks**



**Saku Block**



**Poki Cubes**



# Salted Fish

## Mackerel (Split)

*Scomber scombrus*

---



## Haddock

*Melanogrammus aeglefinus*

---



## Hake (bone-in)

*Urophycis tenuis*

---



## Pollock

*Theragra chalcogramma*

---



## Atlantic Cod (bone-in)

*Gadus morhua*

---



## Genuine Gaspe Cod (bone-in)

*Gadus morhua*



# Smoked Fish

## Smoked Salmon Slices

---



## Smoked Herring Fillets

---



# Seafood Mix

## Mix of Cooked Squid, Whelk Meat, Shrimp and Scallop

---



# Fish Products

## Salmon Burgers

---



# Surimi



**Surimi Sticks**

---



**Surimi Chunks**

---



**Breaded Surimi Crab Claws**

---





Flavors to  
engage and  
quality to  
impress

# Crab Meat

Pasteurized

Colossal

---



Jumbo

---



Super Lump

---



Regular Lump

---



Special

---



Claw Meat

---



Panamei Brand  
Claw Meat

---



# Specialties



**Seaweed Salad**

---

**Edamame Salad**

---



**Calamari Salad**

---



**Masago**  
Capelin Roe

---



**Tobiko**  
Flying Fish Roe - Orange

---



**Ikura**  
Fish Roe

---



**Shime Saba**  
Marinated Mackerel with Kelp

---



**Osushiya Nishin**  
Herring with Capelin Roe

---



**Anago Kabayaki**  
BBQ Eel

---



**Frog Legs**

---





Science-based approach to quality



# Food Safety Standards

At Quirch Foods we are committed to providing Safe Quality products to our customers, by maintaining food safety and quality assurance programs. This is secured with a dedicated, trained, Food Safety and Quality Development team, committed to assuring all regulations and customer requirements are met.

- HACCP based Food Safety Controls
- In-bound and out-bound product inspection
- Yearly third-party audit for safe food handling based on stringent international guidelines as recognized by GFSI (Global Food Safety Initiative)
- SQF Certified Distribution Centers
- On-site inspections by USDA
- Robust Traceability Program
- All imported products and domestic shipments are required to have calibrated electronic Time-Temperature monitoring devices

## Supplier Inspections

Our QA & Procurement Personnel performs on-site inspections and food safety audits to our domestic and overseas suppliers. We inspect facilities worldwide and assist these suppliers in bringing their operations into compliance with HACCP and other recognized food safety and quality management programs to include compliance with all U.S. Federal and state requirements such as the Food Safety Modernization Act.

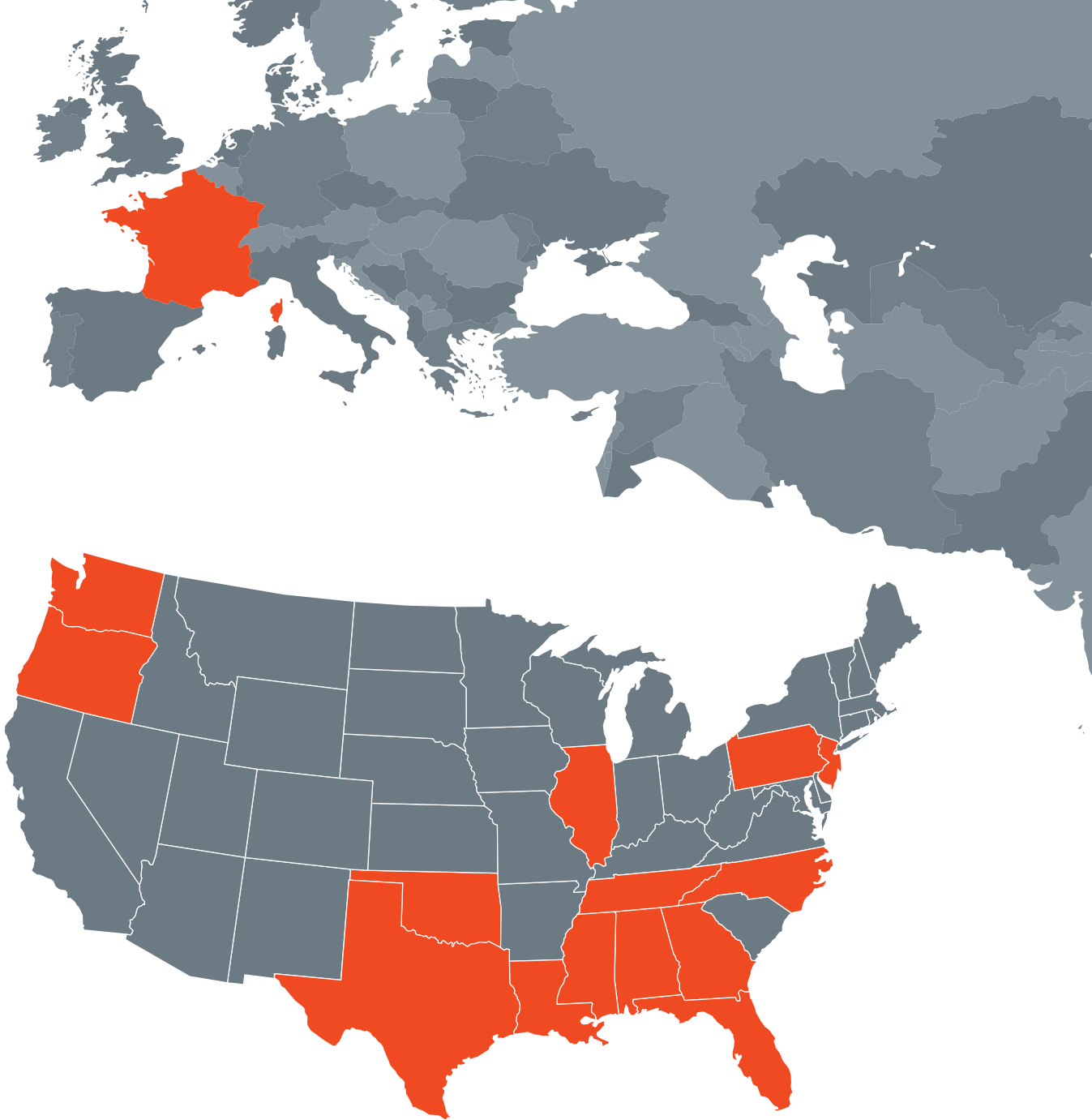




## Export Markets

---

- Mexico
- Guatemala
- Honduras
- Panama
- Costa Rica
- Nicaragua
- Aruba
- Bahamas
- Barbados
- Belize
- Cayman Islands
- Curaçao
- Dominican Republic
- Guyana
- Jamaica
- Antigua and Barbuda
- Dominica
- Grenada
- Saint Kitts and Nevis
- Saint Lucia
- Saint Vincent and the Grenadines
- Sint Maarten
- Suriname
- Trinidad and Tobago
- Turks and Caicos
- Colombia
- Venezuela
- Ecuador
- Peru
- Chile
- Uruguay
- Brazil
- France



## US Distribution

---

### FLORIDA

- Miami
- Coral Gables
- Orlando
- Port Everglades
- Lakeland
- Winter Haven

### GEORGIA

- Atlanta

### N. CAROLINA

- Greensboro

### ALABAMA

- Birmingham

### MISSISSIPPI

- Hattiesburg
- Grenada

### LOUISIANA

- Hammond

### TEXAS

- Dallas
- Houston
- San Antonio

### OKLAHOMA

- Oklahoma City

### TENNESSEE

- Jackson
- Nashville

### NEW JERSEY

- Logan

### PENNSYLVANIA

- King of Prussia

### ILLINOIS

- Chicago

### OREGON

- Clackamas

### WASHINGTON

- Tacoma

### PUERTO RICO

- San Juan



**QUIRCH FOODS, LLC :** MIAMI | ORLANDO | ATLANTA | CHICAGO | GREENSBORO | SAN JUAN  
**COLORADO BOXED BEEF, CO. :** LAKELAND | PORT EVERGLADES | ATLANTA | KING OF PRUSSIA | DALLAS | SAN ANTONIO  
**PREFCO:** HOUSTON | **BUTTS FOODS, LP. :** JACKSON | NASHVILLE | BIRMINGHAM | HATTIESBURG | GRENADA  
**SCARIANO WHOLESALE FOOD DISTRIBUTION:** HAMMOND | **PACIFIC FOOD DISTRIBUTORS:** CLACKAMAS  
**PHOENIX LOGISTICS & COLD STORAGE:** WINTER HAVEN | **HELMSMAN FREIGHT SOLUTIONS | GREAT FISH CO | IQ FOODS**

[www.quirchfoods.com](http://www.quirchfoods.com)