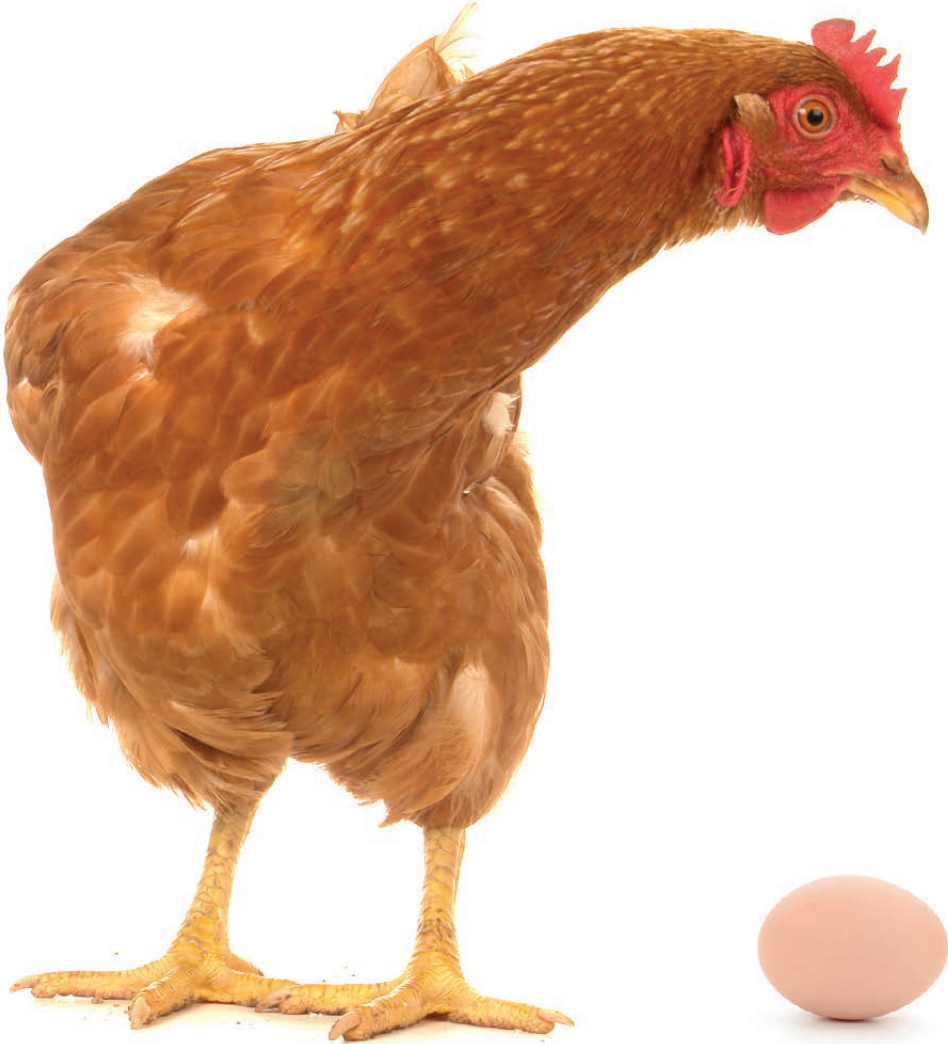


Product Line

Poultry



QUIRCH
FOODS



Distribution • Logistics • Cold Storage



Table of Contents

4	Chicken
10	Turkey
12	Hen
13	Duck
14	Quail
16	Food Safety
18	Distribution Centers

A Guide to Chicken Types

Roaster	Older chicken, about 9 weeks old, dressed weight 6-8lbs
Broiler/Fryer	Younger, tender chicken, about 5-8 weeks old, dressed weight 2.5-6lbs
Gallina/Heavy Hen	Stewing/Baking Hen - a mature breeder laying hen 50-65 weeks old, 6-8lb each
Gallina/Spent Penny Hen	Small Stewing Hen - 2-2.5lb each
Cornish Hen	Small Broiler/Fryer weighing no more than 2lbs each
Fresh	Chicken that has never been handled below 16°F and must be maintained below 40°F at all times
Frozen	Chicken handled below 0°F at all times after processing

Packaging guide

CO2	Packed in poly bag, folded and topped with dry ice (CO2) to maintain temperature
CVP	Vacuum-packed, gas flushed sealed, master bag to maintain freshness. Sealed bag is then placed in a master carton.
Poly	Placed inside a plastic bag, which may be heat-sealed, tied, etc, and placed inside a master carton.
Tray Pack	Packed in retail trays, sealed, packed in master carton
Box	Packed in retail boxes, sealed, packed in master carton


Chicken

Poultry is one of the most widely eaten types of meats globally and we're proud to offer some of the very best. It provides nutritional benefits and its versatility in preparation is one of the reasons why it is one of the most preferred proteins.




Fresh Roasters & Parts

CVP/CO2 packing


	CUTS	DESCRIPTION
	Whole Roasters	8 week old chicken, with giblets. Sizes:6-8lb
	Legs	Whole roaster leg without back
	Drumsticks	Roaster drumstick
	Wings	Whole roaster wings (3-joint)
		
		
		



Whole Fryers, WOGS & Parts

	CUTS	DESCRIPTION
	Fresh Whole Fryers	Young chicken, 6-8 weeks old, sizes:2.5-6lb, dressed weight Packing: CVP/CO2/Bagged/Individually
	Fryers - WOGS	Whole fryers without giblets, sizes: 2.5-6lb, dressed weight
	Frozen Whole Fryers	Young chicken, 6-8 weeks old, sizes:2.5-6lb, dressed weight Packing: CVP/CO2/Bagged/Individually
	Fryers - WOGS	Whole fryers without giblets, sizes: 2.5-6lb, dressed weight



Boneless Parts Fresh/Frozen

	CUTS	DESCRIPTION
	Fresh Breasts Breast Tenderloin Leg Meat Thigh Meat	Packing: CVP/CO2 Cases: 4x10lb, 10lb CW & EW bags Deboned & Skinless Breast Muscle w/o Tenderloin Deboned & Skinless Inner Breast Meat Deboned & Skinless Thigh & Drumstick meat Deboned & Skinless Thigh Meat
	Frozen Boneless Breasts Breast Tenderloins Boneless Leg Meat Boneless Thigh Meat	Packing: CVP/CO2 Cases: 4x10lb, 10lb CW & EW bags
	IQF-Individually Quick Frozen Packing: 10lb, 5lb, 2.5lb and 2lb bags	



Breasts

Fresh/Frozen

	CUTS	DESCRIPTION
	Fresh (Bone-in) Whole Breasts Split Breasts Miscut Breasts	Packing: CVP/CO2, Cases: 40lb Entire fryer breasts, two lobes, bone-in, skin-on & skinless available 1/2 off whole, one lobe Plant grade- whole & split breasts, may have defects
	Frozen (Bone-in) Whole Breasts Split Breasts Miscut Breasts	Packing: CVP/CO2, Cases: 40lb Entire fryer breasts, two lobes, bone-in, skin-on & skinless available Fryer breast quarter with wing Plant grade- whole & split breasts

Wings

Fresh/Frozen

	CUTS	DESCRIPTION
	Fresh Wings Regular & Jumbo Party Wings B-Wings	Packing: CVP/CO2, Cases: 4x10lb, 1x40lb, 8x5lb Whole Wings (3-joint: drummette, mid-section, tip) 1st & 2nd Joint - separated (drummette & mid section, separately) Miscut, Bruised, Red Tips
	Frozen Wings Regular/Med/Jumbo Miscut Wings B-Wings / Economy	Packing: CVP/CO2, Cases: 4x10lb, 1x40lb, 8x5lb Based on Live Weight Plant Grade - Whole Wings Miscut, Bruised, Red Tips



Leg Quarters (Back In)

Fresh/Frozen



CUTS

Fresh

Leg 1/4's - Bulk

Frozen

Leg 1/4's - Bulk

Leg 1/4's - Bag

DESCRIPTION

Packing: CVP/CO2, Cases: 40lb

Fryers/Broiler whole leg with portion of back

Sizes: Small, Medium, Large, Jumbo

Packing: CVP/CO2, Cases: 40lb

Packing: 10lb Poly Bag, Cases: 40lb

Thighs & Drums

Fresh/Frozen



CUTS

Fresh

Thighs

Drumsticks



Frozen

Thighs

Drumsticks

DESCRIPTION

Packing: CVP/CO2, Cases: 40lb

Fryers/Broiler leg cut above the knee/drumstick

Packing: CVP/CO2, Cases: 40lb

Packing: CVP/CO2, Poly Bag, Cases: 40lb

Offals

Fresh/Frozen



Fresh

Gizzards

Livers

Backs

Necks

Hearts



Frozen

Gizzards

Livers

Backs

Necks

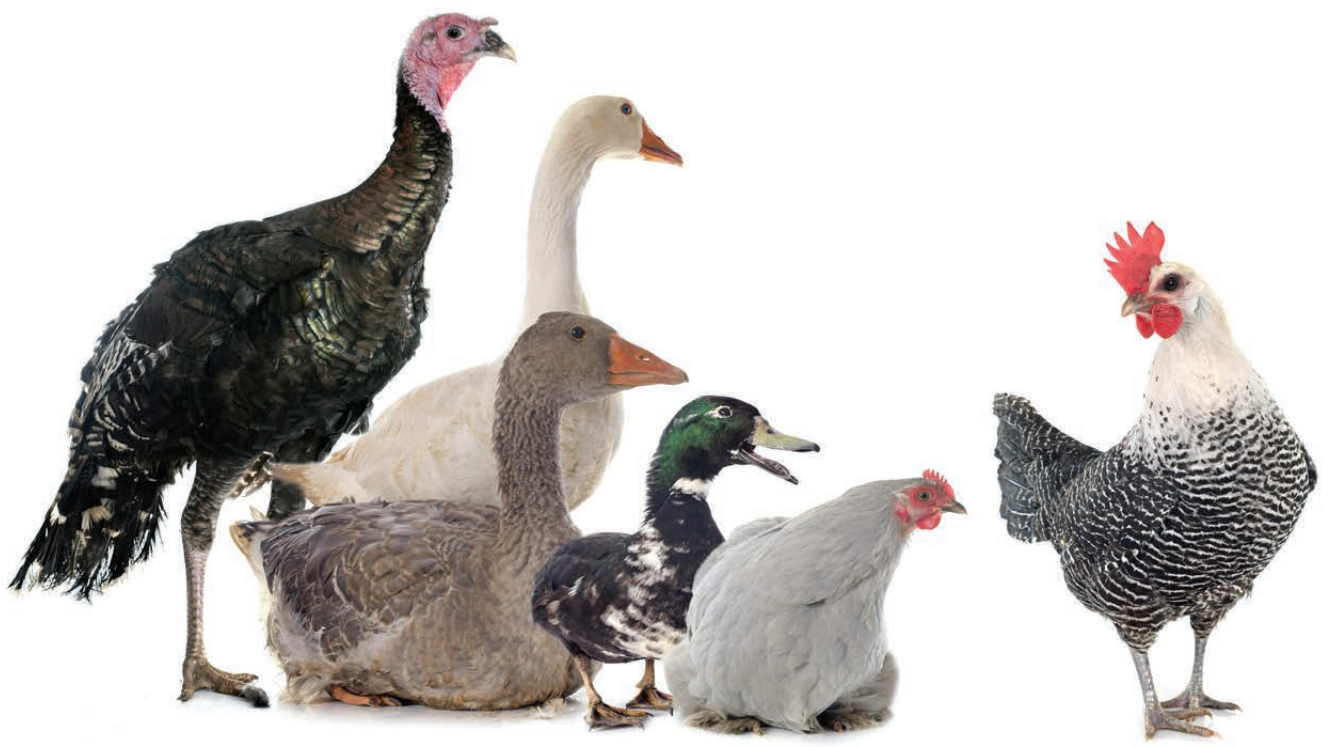
Hearts

Feet

Paws



Sustainably
Farmed



Turkey

Versatility in preparation is what makes turkey popular. Use dry or moist methods of cooking, including roasting, broiling, grilling, pan-frying, braising and stewing.



Frozen Roasters & Parts



CUTS

DESCRIPTION

Whole Turkeys

Sizes: 4-30lb (4-9.5, 8-10, 10-12, 12-14, etc)
 Packing: Individually Vacuum Packed
 Cases: 2 or 4 whole birds per case
 Grading: A Grade or Plant Grade, Basted or Natural



Bone-In Breasts

Sizes: 8-10lbs, 10-12lbs, 12-14lbs, 14-16lbs, 16-18lbs, 18-20lbs
 Grading: A Grade or Plant Grade, Injected or Natural



Drumsticks

Sizes: Tom or Hen (Smaller)
 Packing: Bulk w/Poly-Liner - Cases: 30lb

Wings
 2-Joint or 3-Joint

Sizes: Tom or Hen (Smaller)
 Packing: Bulk w/Poly-Liner - Cases: 30lb

Boneless Parts

Frozen



CUTS

- Breast Meat
- Thigh Meat
- Tenders
- Natural (Strap-in)
- Tenders
- De-Strapped

DESCRIPTION

- Packing: Bulk w/Poly-Liner, Cases: 40lb
- Packing: Bulk w/Poly-Liner, Cases: 40lb
- Packing: Bulk w/Poly-Liner, Cases: 40lb
- Packing: Bulk w/Poly-Liner, Cases: 40lb

Other Parts

Frozen



CUTS

- Drummettes
- Gizzards
- Necks
- Tails

DESCRIPTION

- Packing: Bulk w/Poly-Liner, Cases: 30lb
- Packing: Bulk w/Poly-Liner, Cases: 30lb
- Packing: Bulk w/Poly-Liner, Cases: 30lb
- Packing: Bulk w/Poly-Liner, Cases: 30lb

Ground and Smoked Parts

Frozen



CUTS

- Smoked Necks
- Smoked Tails
- Smoked Drums
- Ground Turkey
- Smoked Turkey Wings

DESCRIPTION

- Packing: Bulk w/Poly-Liner, Cases: 30lb
- Packing: Bulk w/Poly-Liner, Cases: 30lb
- Packing: Bulk w/Poly-Liner, Cases: 30lb
- Cases: 2x10lb, 12x1lb
- Packing: Bulk w/Poly-Liner, Cases: 30lb



Hen

Cornish game hens are small pump chickens that produce a greater amount of white meat in comparison to their dark meat. Very tender and flavorful, hens are easy and quick to cook.



Frozen Hens



CUTS

Gallina/Baking Hen
 Whole Guinea Fowl
 Spent Hen, Head-on, Feet-on
 Spent Penny Hen
 Whole Quail Bone-in

DESCRIPTION

Sizes: 6x5-7lb
 Sizes: 8x2.5lb
 Sizes: 10x2-2.5lb
 Sizes: 15x1.8-2lb
 Sizes: 6x6x4.5oz

Frozen Cornish Hens



CUTS

Cornish Hens - Single Pk
 Cornish Hens - Twin Pk

DESCRIPTION

Sizes: 24x16oz
 Sizes: 12x2x20oz



Duck

Duck has a darker and richer meat. Nutty and strong flavor, but not overpowering. Versatile, it can be cooked in a lot of ways, including roasting, broiling, grilling, pan-frying, braising and stewing.



Whole Duck



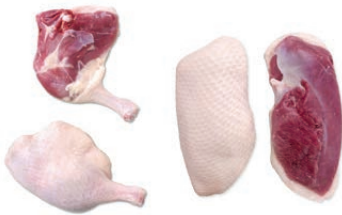
CUTS

Whole
Whole

DESCRIPTION

Grade A
Head and Feet On

Duck Parts



CUTS

Leg
Breast
Smoked Breast
Leg Quarters

DESCRIPTION

Boneless, Skin-on
Boneless, Skin-on

Quail

Tiny, simple and flavor-packed: a bird with a hint of the wild! You can roast quail or fry them, braise, grill, broil or sauté them. Delicate and very moist, a flavor to remember!



Whole Quail



CUTS

- Frozen
- Bone-in, WP

DESCRIPTION

Packing: WP
Cases: 10lb
6x4.5oz (6 trays/case, 4pcs/tray)





Life's most memorable moments happen around food

A close-up photograph of raw chicken parts, including drumsticks and thighs, arranged on a light-colored wooden surface. The chicken skin is pale pink and glistening. An orange rectangular box is overlaid on the left side of the image, containing white text.

Science-
based
approach
to quality

Food Safety Standards

At Quirch Foods we are committed to providing Safe Quality products to our customers, by maintaining food safety and quality assurance programs. This is secured with a dedicated, trained, Food Safety and Quality Development team, committed to assuring all regulations and customer requirements are met.

- HACCP based Food Safety Controls
- In-bound and out-bound product inspection
- Yearly third-party audit for safe food handling based on stringent international guidelines as recognized by GFSI (Global Food Safety Initiative)
- SQF Certified Distribution Centers
- On-site inspections by USDA
- Robust Traceability Program
- All imported products and domestic shipments are required to have calibrated electronic Time-Temperature monitoring devices

Supplier Inspections

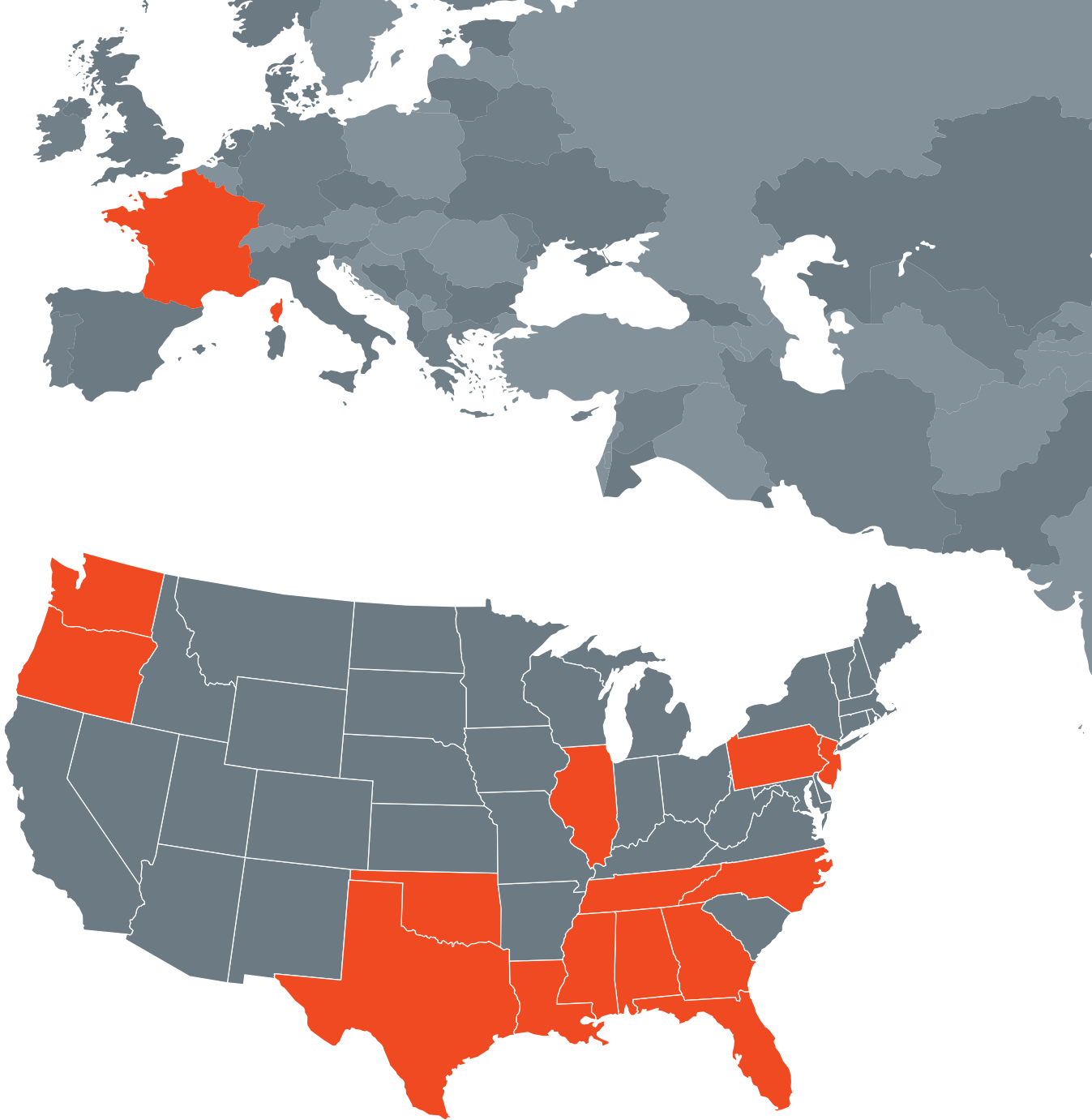
Our QA & Procurement Personnel performs on-site inspections and food safety audits to our domestic and overseas suppliers. We inspect facilities worldwide and assist these suppliers in bringing their operations into compliance with HACCP and other recognized food safety and quality management programs to include compliance with all U.S. Federal and state requirements such as the Food Safety Modernization Act.





Export Markets

- Mexico
- Guatemala
- Honduras
- Panama
- Costa Rica
- Nicaragua
- Aruba
- Bahamas
- Barbados
- Belize
- Cayman Islands
- Curaçao
- Dominican Republic
- Guyana
- Jamaica
- Antigua and Barbuda
- Dominica
- Grenada
- Saint Kitts and Nevis
- Saint Lucia
- Saint Vincent and the Grenadines
- Sint Maarten
- Suriname
- Trinidad and Tobago
- Turks and Caicos
- Colombia
- Venezuela
- Ecuador
- Peru
- Chile
- Uruguay
- Brazil
- France



US Distribution

FLORIDA

- Miami
- Coral Gables
- Orlando
- Port Everglades
- Lakeland
- Winter Haven

GEORGIA

- Atlanta

N. CAROLINA

- Greensboro

ALABAMA

- Birmingham

MISSISSIPPI

- Hattiesburg
- Grenada

LOUISIANA

- Hammond

TEXAS

- Dallas
- Houston
- San Antonio

OKLAHOMA

- Oklahoma City

TENNESSEE

- Jackson
- Nashville

NEW JERSEY

- Logan

PENNSYLVANIA

- King of Prussia

ILLINOIS

- Chicago

OREGON

- Clackamas

WASHINGTON

- Tacoma

PUERTO RICO

- San Juan



QUIRCH FOODS, LLC : MIAMI | ORLANDO | ATLANTA | CHICAGO | GREENSBORO | SAN JUAN
COLORADO BOXED BEEF, CO. : LAKELAND | PORT EVERGLADES | ATLANTA | KING OF PRUSSIA | DALLAS | SAN ANTONIO
PREFCO: HOUSTON | **BUTTS FOODS, LP. :** JACKSON | NASHVILLE | BIRMINGHAM | HATTIESBURG | GRENADA
SCARIANO WHOLESALE FOOD DISTRIBUTION: HAMMOND | **PACIFIC FOOD DISTRIBUTORS:** CLACKAMAS
PHOENIX LOGISTICS & COLD STORAGE: WINTER HAVEN | **HELMSMAN FREIGHT SOLUTIONS | GREAT FISH CO | IQ FOODS**

www.quirchfoods.com