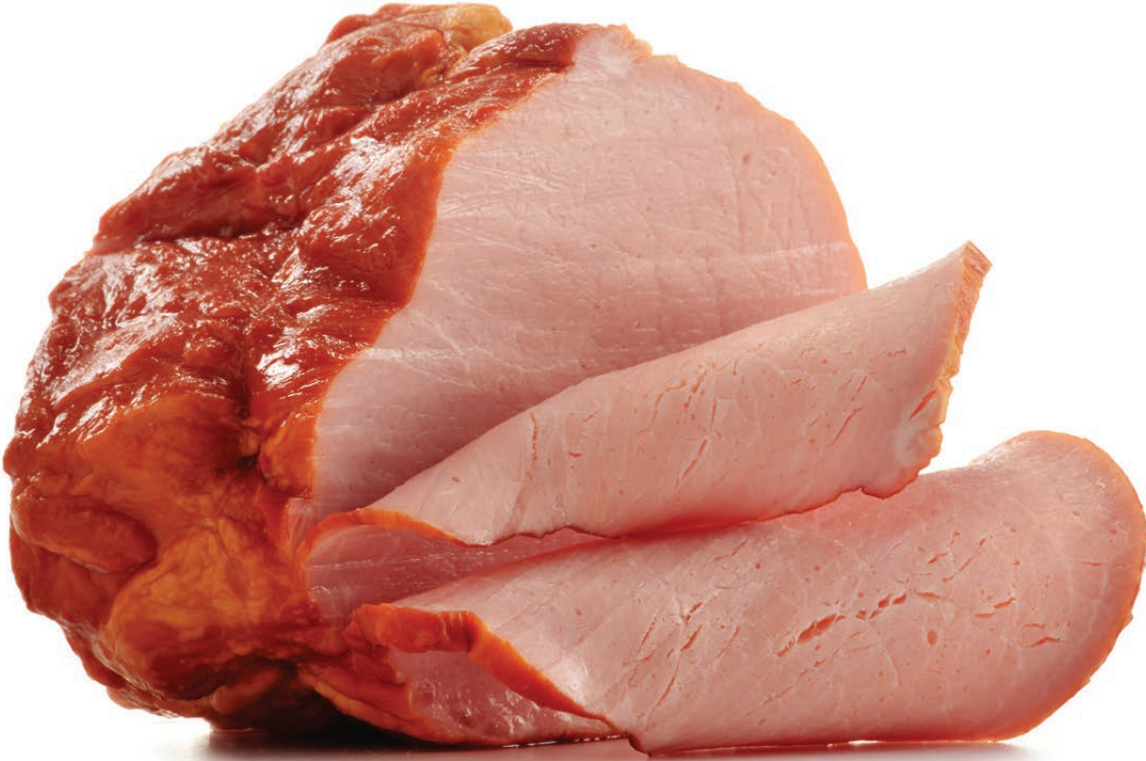


Product Line

Deli



**QUIRCH**  
FOODS



Distribution • Logistics • Cold Storage

# Deli

Your Deli, Overhauled. Since the beginning of our journey in 1967, we have taken especial care in building and curating our selection of over 300 products for the deli department. Enjoy.



## Hispanic Hams



- |   |          |
|---|----------|
| 332287 - El Toro Old Fashion (Jamón Viejo)    | - 2/10lb |
| 332353 - El Toro Serrano Ham                  | - 2/12lb |
| 332355 - El Toro Serrano Ham Whole Muscle 3pc | - 3/ 9lb |
| 332358 - El Toro Sweet Serrano Ham            | - 2/12lb |
| 332285 - El Toro Bolo Ham                     | - 2/15lb |
| 332660 - Quirch Cooked Seasoned Ham           | - 1/15lb |



Smithfield

Gwaltney



## Buffet Hams

---



- 332348 - Farmland Buffet Ham 25% - 3/10lb
- 332340 - Farmland Buffet Ham 35% - 12/2.5lb
- 332360 - B Farmland uffet Ham 35% - 2/10lb

## Hams

---



- 332955 - Carando Virginia Honey Ham W/A - 2/13lb
- 332905 - Carando Virginia Smoked Ham W/A - 2/12lb
- 332532 - Smithfield Country Ham Mild Cure Bone-In - 4/15lb

## 4x6 Hams

---

- 332211 - Farmland Cooked Ham - 2/13lb
- 332212 - Mambo Cooked Ham 35% - 2/12lb
- 332220 - Imperial Cooked Ham 35% - 3/14lb
- 332665 - Quirch Split Seasoned Ckd Ham - 7.5lb
- 332921 - El Toro Sweet Ham - 2/14lb
- 332982 - Farmland Boneless Pit Ham - 1/15lb



## 4x4 Ham

---

- 394845 - Mambo Cooked Ham - 4/7lb

# Hams



## DIETZ & WATSON

342010 - Cooked Square Ham	- 3/12.25lb
342012 - Pear Shaped Baked VA Ham	- 2/13lb
342014 - Black Forest Ham	- 1/10lb
342016 - Honey Cured Ham 97% FF	- 2/7lb
342018 - Cajun Ham W/A	- 1/9lb
394805 - Smoked Maple Glazed Ham	- 1/10.5lb
394807 - Imported Cooked Ham	- 2/11lb
394809 - Chopped Ham w/Natural Juices	- 3/8lb
394811 - Rosemary Ham	- 1/7lb
394813 - Tomato & Basil Ham	- 1/7lb
394815 - Capocollo Ham W/A	- 2/9lb
394816 - Mini Chef Carved BF Ham	- 4/2.5lb
394817 - Mini Chef Carved Nat.Juice Ham	- 1/5lb
394818 - Gourmet Lite VA Ham	- 1/12lb
394819 - Black Pepper Whole Ham	- 1/11.5lb
394820 - Gourmet Lite Tavern Ham	- 1/9lb
394823 - BF Smoked Ham	- 2/5lb
394825 - Honey Roll Ham	- 2/6lb
394826 - Lite F/C Ham w/ Natural Juices	- 1/14lb
394827 - Tavern Ham W/A	- 3/6.5lb
394828 - Peppered Ham W/A	- 2/6.5lb
394829 - Lite VA Ham w/Pineapple	- 2/6lb
394831 - BF Pear Shaped Ham	- 1/12lb
394836 - Classic Trimmed & Tied Ham	- 2/7lb
394837 - Gourmet Lite VA Ham	- 2/5lb
394838 - BF Spiral Sliced Ham	- 4/8.5lb

## ECKRICH

394904 - Black Forest Ham	- 2/7.8-8lb
394905 - Brown Sugar Nugget Ham	- 2/7-7.5lb
394906 - Ham Off the Bone, Smoked, Bnls	- 2/8.7-9lb



PREMIUM MEATS AND ARTISAN CHEESES



# Beef



## DIETZ & WATSON

- 342066 - Spiced Luncheon Meat - 3/6lb
- 342072 - Spiced Pastrami - 2/4.5lb
- 342076 - Corned Beef, Choice, Cap-Off - 2/5lb
- 395008 - Trimmed & Tied Roast Beef Halves - 2/8lb
- 395019 - Corned Beef, Extra Lean - 2/5lb
- 395020 - Top Round Roast Beef, London Broil - 2/6lb
- 395022 - Prime Rib w/Juices - 1/6lb
- 395025 - Roast Beef Halves, Rare - 2/6lb
- 395027 - Pastrami Brisket, First Cut - 2/5lb
- 395028 - Eye Round Roast Beef, Choice - 2/6lb
- 395029 - Roast Beef Halves, Cap Off - 2/8lb
- 395030 - Top Round Dried Beef Halves - 1/9lb
- 395031 - Oven Roasted Natural Halves, Rare - 2/8lb
- 395034 - Pickled Corned Beef Brisket - 1/15lb
- 395035 - Roast Beef, Cap-Off - 2/7lb
- 395040 - Italian Roast Beef - 2/8lb
- 395041 - Premium Angus Roast Beef, Cap-Off - 2/5.5lb

# Pork

## DIETZ & WATSON

- 319008 - Roasted Pork, Italian-style - 1/7lb
- 319018 - Roasted Pork BBQ - 1/8lb
- 341000 - Bacon, Canadian-style - 2/3.5lb
- 341005 - Bacon Halves, Derind - 4/4.5lb
- 341010 - Bacon, Hotel Layout - 1/15lb
- 342074 - Roast Sirloin of Pork - 1/6lb



# Chicken Breast



## DIETZ & WATSON

- 342032 - Rotisserie Breast of Chicken - 2/5.5lb
- 395012 - Honey BBQ - 2/4lb
- 395013 - Buffalo Style - 2/5lb
- 395018 - Gourmet Chicken Breast - 2/4lb
- 395021 - Southern Fried - 2/4lb
- 395033 - Lemon Pepper Chicken Breast - 2/4.5lb

## ECKRICH

- 395103 - Browned Chicken Breast - 2/5-5.3lb

# Turkey Breast



Dietz & Watson	
221010 - London Broil	- 2/6lb
342022 - Original Gourmet	- 2/9lb
342024 - Oven Classic	- 1/8lb
342026 - Smoked Black Forest	- 2/9lb
342028 - Honey Cured Glazed	- 2/7lb
395004 - Maple Honey Cured	- 2/6.5lb
395005 - Smoked Mesquite	- 2/7lb
395006 - Pepper & Garlic	- 2/4lb
395007 - Smoked Peppercorn	- 2/4lb
395009 - Oven Roasted Homestyle	- 2/7lb
395010 - Santa Fe	- 2/4lb
395011 - Banquet Cater Style	- 1/8lb
395014 - Cracked Black Pepper	- 1/9lb
395015 - Gourmet Lite	- 2/7lb
395016 - Braised Homestyle	- 2/8lb
395024 - Golden Brown	- 2/11lb
395032 - Pastrami	- 2/6.5lb
395036 - Turkey Breast - No Salt	- 1/11lb
Eckrich	
395069 - Smoked Turkey Breast	- 2/9-9.5lb
395070 - Oven Roasted Turkey	- 2/9-9.25lb

# Buffet Hams Turkey

252100 - Carolina Turkey Bologna	- 4/5lb
252105 - Carolina Turkey Salami	- 4/5lb
253610 - Carolina Turkey Ham 20%	- 2/6.5lb
253704 - Carolina Turkey White Oven Rstd Turkey Slicing	- 2/9lb
253740 - Carolina Turkey Turkey Pastrami	- 4/3.5lb
395000 - Country Farms Sknls Whole Muscle Turkey Breast	- 2/9lb
395003 - Country Farms Brownd Whole Muscle Turkey Brst	- 2/9lb





# Deli Meats & Cheeses



## Salamis

- 344384 - La Abuelita Spanish Mortadella - 2/8lb
- 346235 - Carando Pepperoni - Sandw. Stick - 4/2.25lb
- 346375 - Carando Hard Salami - 3/6.5lb
- 346455 - Carando Genoa Salami - 3/6lb
- 346460 - Venecia Genoa Salami - 2/6lb
- 346530 - Bremen Hard Salami - 2/6lb
- 346588 - Higueral Salami Dominicano Orig. - 6/2.5lb
- 347030 - La Abuelita Chorizo Seco Rope - 2/5lb
- 347036 - La Abuelita Chorizo Cantimpalo - 2/3.5lb
- 395610 - Higueral Salami Popular Negro - 6/2.5lb
- 395713 - Colosseum Hard Salami - 3/7lb
- 395714 - Centurion Hard Salami - 3/6.5lb



# Salumeria Italian-Style



## DIETZ & WATSON

- 342000 - Skinless Shank-less Prosciutto - 1/8lb
- 342001 - Prosciutto di Parma - 1/16lb
- 342002 - Mortadella w/Pistachio - 2/7.5lb
- 342003 - Sweet Capocollo - 3/3.35lb
- 342004 - Sweet Sopressatta - 3/9lb
- 342005 - Hot Capocollo - 3/3.35lb
- 342006 - Hard Salami - 4/3.5lb
- 342007 - Prosciuttini Italian-style - 1/7lb
- 342009 - Mortadella w/Pistachio - 2/9lb
- 342011 - Hot Capocollo Ham - 3/4lb
- 342013 - Sopressata - 2/6lb
- 342044 - Prosciutto - 2/4.25lb
- 342046 - Pancetta - 3/3.25lb
- 342048 - Mortadella Loaf - 2/7lb
- 342052 - Genoa Salami Chub - 4/3.5lb
- 342054 - Cooked Salami - 2/8.5lb
- 342056 - Pepperoni Chub - 4/2.75lb
- 395711 - Hard Salami - 3/7.25lb

## CARANDO

- 342420 - Boneless Prosciutto Halves - 2/4.5lb
- 344422 - Mortadella Alpina - 2/4.5lb

## Loaves

### ECKRICH

- 342019 - Cotto Salami - 1/9-9.55lb
- 342063 - Jalapeño Loaf - 2/9-9.3lb
- 342065 - Olive Loaf - 3/3-3.2lb
- 342067 - Luncheon Loaf - 1/8.5lb
- 342069 - P&P Loaf - 2/9-9.4lb
- 344001 - Garlic Bologna - 4/4-4.8lb
- 344002 - Beef Bologna 1/4 Stick - 4/4-4.7lb



### DIETZ & WATSON

- 342064 - Olive Loaf - 1/7lb
- 342068 - P & P Loaf - 1/7lb
- 344118 - Bologna Meat - 2/9.5lb
- 344282 - Braunschweiger/Liverwurst - 3/6lb
- 392025 - Wieners Natural Casing - 4/2.5lb
- 392400 - Polska Kielbasa Rope - 3/4lb
- 394404 - German Knockwurst - 3/3.35lb
- 394821 - Head Cheese N/C - 1/5lb
- 395700 - Gourmet Lite Bologna - 1/7lb
- 395702 - German Bologna - 2/8lb
- 395703 - Souse Roll - 2/5lb



## Deli Loaf

- 344746 - Sunset Farm Hot Souse Loaf - 2/7lb
- 344744 - Sunset Farm Mild Souse Loaf - 2/7lb



PASSION

is our

secret

ingredient



# Cheese



## Cheese Loaves



### DIETZ & WATSON

404000 - Oven Roasted Garlic	- 2/5lb
404001 - Cheddar Horseradish	- 2/5lb
404002 - Monterey Jack	- 2/5lb
404003 - Cheddar w/Hot Peppers	- 2/5lb
404004 - Cheddar w/Buffalo Wing Sauce	- 2/5lb
404005 - Mini Horn Colby	- 2/6lb
404006 - Danish-style Havarti	- 2/5lb
404010 - Swiss	- 2/8lb
404015 - Lacey Swiss	- 1/10lb
404016 - Swiss 4x6	- 4/8lb
404020 - Baby Swiss	- 2/5lb
404025 - Gouda Wheel	- 1/9lb
404026 - Smoked Gouda Wheel	- 1/9lb
404984 - Swiss Loaf 4x4	- 6/7.5lb
407610 - Muenster Loaf	- 2/5lb
408000 - Pepperoni	- 2/5lb
408005 - Provolone Loaf	- 2/6lb
408028 - Mozzarella Loaf P/S	- 2/5lb
408410 - Provolone Loaf	- 6/6lb
410330 - Yellow American Loaf	- 6/5lb
410334 - White American Loaf	- 6/5lb

# Cheese Loaves

## Domestic & Natural Block Cheeses



- 404970 - Brewster Swiss - 2/12lb
- 404018 - Daisy Red Wax Cheddar - 1/22lb
- 404019 - Amish Clas.Orange Rind Muenster - 2/6lb
- 404060 - Nasonville Mild Cheddar Y. Block - 1/40lb
- 404061 - Mild Cheddar Yellow Loaf - 1/10lb
- 404062 - Nasonville Pepper Jack Loaf - 1/10lb
- 404063 - Nasonville Monterey Jack Loaf - 1/10lb
- 408032 - Jacobo's Part Skim Mozzarella Loaf - 8/6lb
- 408034 - Jacobo's Whole Milk Mozzarella Loaf - 8/6lb
- 408038 - Jacobo's Provolone - 6/6lb



## Imported Cheeses Loaves & Wheels



- 404580 - Gayo Azul Gouda Wheel - 1/10lb
- 405060 - Gayo Azul Swiss Emmenthaler - 2/14lb
- 407401 - Don Alvaro Manchego Wheel - 2/6lb
- 404097 - Ammerlander Havarti Cheese - 4/6.6lb
- 404099 - Ammerlander Gouda Loaf - 4/6.6lb
- 472185 - Ammerlander German Swiss Loaf - 3/8lb
- 472187 - Muhlenhof Swiss Loaf - 3/8lb



# Cheese

## Hispanic Cheeses



### GAYO AZUL

- 404830 - Queso Blanco Loaf - RW\* - 4/2.5lb
- 404820 - Queso Blanco Loaf - 4/5lb
- 404054 - Queso Blanco for Frying - 4/5lb

\*RW - Random Weight

### EL AUTÉNTICO

- 410048 - Queso Fresco - RW Wheel - 3/5lb
- 410050 - Queso Blanco RW - 8/2.5lb
- 410052 - Queso Blanco RW - 4/5lb



### EL VENADITO

- 410062 - Queso Blanco Loaf - 4/5lb
- 410064 - Queso Blanco Low Salt Loaf - 1/40lb



### EL REAL

- 410072 - Queso Fresco Wheel - 3/5lb
- 410074 - Queso Seco RW - 1/40lb
- 410076 - Queso Fresco Wheel - 2/7.5lb
- 410078 - Queso Oaxaca Bola - 4/5lb





## Bongards



### CHEESE

- 404021 - Yellow American Cheese Loaf - 6/5lb
- 404022 - White American Cheese Loaf - 6/5lb
- 404076 - Feather Shred Cheddar Cheese - 4/5lb
- 404078 - Fancy Shred Monterey Cheese - 4/5lb
- 404080 - Feather Shred Mozzarella Cheese - 4/5lb
- 404082 - Cheddar & Monterey Fancy Shred - 4/5lb
- 410260 - White American Cheese 120 Slices - 4/5lb
- 410320 - White American Cheese 160 Slices - 4/5lb
- 410400 - White American Cheese Block - 6/5lb
- 410460 - Yellow American Cheese 120 Slices - 4/5lb
- 410620 - Yellow American Cheese 160 Slices - 4/5lb
- 410840 - Yellow American Cheese Block - 6/5lb
- 411060 - White American Swiss 160 Slices - 4/5lb
- 412112 - Italian Blend Shred Cheese - 4/5lb

### CHEESE PRODUCT

- 404048 - White American Cheese 160 Slices - 4/5lb
- 410321 - Yellow American Cheese 160 Slices - 4/5lb
- 410322 - Yellow American Cheese 120 Slices - 4/5lb
- 410325 - White American Cheese 160 Slices - 4/5lb
- 410327 - Yellow American Cheese 160 Slices - 4/5lb
- 410621 - Yellow American Cheese 160 Slices - 4/5lb

# Retail-Ready



## Salumeria Italian Brand



### DIETZ & WATSON

342210 - Sopressatta Chub	- 12/7oz
342212 - Abruzzese Salami Chub	- 12/7oz
342202 - Genoa Salami Chub	- 15/10oz
342203 - Pancetta Chub	- 10/1lb
342204 - Bologna Ring	- 12/1lb
342205 - Pepperoni Twin Sticks	- 10/12oz
342213 - Cacciatore Dry Sausage Chub	- 15/13oz
342214 - Mini Hard Salami	- 12/7oz



# Sausages

## DIETZ & WATSON

392001 - Beef & Pork Franks	- 24/1lb	394516 - Italian Chicken Sausage	- 8/14oz
392007 - German Wiener N/C	- 7/14oz	394517 - Pepper & Onion Italian Sausage	- 8/14oz
392009 - Cheddarwurst	- 6/1lb	394504 - Pepper & Onion Chicken Sausage	- 8/12oz
392012 - Smoked Hung Bratwurst	- 6/1lb	394532 - Italian Sausage	- 8/12oz
392013 - German Knockwurst	- 6/1lb	394531 - Andouille Chicken Sausage	- 8/12oz
392014 - Regular Foot Long Franks	- 3/3lb	394534 - Buffalo-style Chicken Sausage	- 8/12oz
392016 - Special Foot Long 3/1 Franks	- 4/2lb	394513 - Chicken Bratwurst	- 8/14oz
392017 - New York-style Beef	- 7/1lb	394525 - Chicken Bratwurst	- 8/12oz
392022 - Cocktail Beef Franks	- 12/14oz	342208 - Landjaeger Salami Stick	- 24/2oz
392023 - Gourmet Lite Franks	- 12/1lb	394530 - Baurenwurst Net Casing	- 6/1.16lb
392055 - NY Deli Beef Franks	- 12/1lb	395500 - Mini Chorizo	- 12/6oz
392056 - Bratwurst Thuringer	- 6/1lb		
392408 - Polska Kielbasa	- 6/1lb		
392333 - Polish Kielbasa	- 12/14oz		
392427 - Hot Smoked Sausage	- 12/1lb		
394533 - Jerk Chicken Sausage	- 8/12oz		



# Pre-Sliced Case Ready

## DIETZ & WATSON

391013 - P & P Loaf Shingles	- 10/7oz
391015 - Chicken Breast Buffalo-style	- 10/7oz
391023 - Meat Bologna	- 10/7oz
391025 - Corned Beef	- 10/7oz
391027 - Black Forest Ham	- 10/7oz
391031 - Cooked Ham	- 10/7oz
391033 - VA Lite Gourmet Ham	- 10/7oz
391035 - Pastrami	- 10/7oz
391039 - Golden Brown Turkey Shingles	- 10/7oz
391041 - Cooked Salami	- 10/7oz
391043 - Genoa Salami	- 10/7oz
391044 - Sopressatta	- 12/3oz
391047 - Mortadella	- 12/3oz
391049 - Prosciutto	- 12/3oz
391052 - Roast Beef	- 10/7oz
391053 - Honey Turkey	- 10/7oz
391055 - Tavern Ham W/A	- 10/7oz
391057 - Black Forest Smoked Turkey	- 10/7oz
391092 - Turkey Gourmet Lite Sliced	- 10/7oz
394600 - Ham Breakfast Fillets	- 8/12oz
395048 - Turkey Breast Fillets	- 12/7oz



# Retail-Ready



## Cheeses



### DIETZ & WATSON

- 410336 - White American Slices - 20/8oz
- 410508 - Pepper Jack Pre-Cut - 14/12oz
- 410515 - Gouda Pre-Cut - 14/12oz
- 410543 - Smoked Gouda Wedge - 14/12oz
- 410549 - Mozzarella Pre-Cut - 12/8oz
- 410551 - Havarti w/Dill Pre-Cut - 12/8oz
- 410553 - Muenster Pre-Cut - 12/8oz
- 410561 - Danish Havarti Pre-Cut - 12/8oz
- 410562 - Edam Pre-Cut - 6/12oz
- 410563 - Baby Swiss Pre-Cut - 12/8oz
- 410564 - Jarlsberg Pre-Cut - 12/8oz
- 411010 - Swiss Slices - 20/8oz
- 471432 - Yellow American Slices - 20/8oz
- 471433 - Cheddar w/Peppers Slices - 12/8oz
- 471434 - Cheddar w/Horseradish Slices - 12/8oz
- 471435 - Cheddar w/Garlic Slices - 12/8oz
- 471436 - Muenster Slices - 20/8oz
- 471437 - Provolone Slices - 20/8oz

# Retail-Ready

## Condiments

### DIETZ & WATSON

- 399001 - Hot & Chunky Horseradish - 12/9oz
- 399002 - Cranberry Horseradish - 12/9oz
- 399003 - Smoky Horseradish - 12/9oz
- 399004 - Sweet & Hot Mustard - 12/9oz
- 399006 - Champagne-Dill Mustard - 12/9oz
- 399007 - Jalapeño Mustard - 12/9oz
- 399008 - Cranberry Honey Mustard - 12/10oz
- 399009 - Wasabi Mustard - 12/9oz
- 399011 - Whole Grain Dijon Mustard - 12/9oz
- 399012 - Chipotle Mustard - 12/9oz
- 399013 - Deli Kosher Pickles - 1/4gl pail
- 399014 - Sauerkraut - 12/1lb
- 399015 - Sweet Vidalia Onion Sauce - 12/12oz
- 399016 - Spicy Brown Mustard - 12/12oz
- 399025 - Stone Ground Mustard - 12/9oz
- 399026 - Horseradish Sauce - 12/12oz
- 399027 - Hoagie Dressing - 12/8oz
- 399028 - Honey Mustard - 12/11oz
- 399030 - Hot & Creamy Horseradish Sauce - 12/8oz
- 399031 - Hot & Zesty Pickles - 1/33lb



PREMIUM MEATS AND ARTISAN CHEESES



Science-based approach to quality

# Food Safety Standards

At Quirch Foods we are committed to providing Safe Quality products to our customers, by maintaining food safety and quality assurance programs. This is secured with a dedicated, trained, Food Safety and Quality Development team, committed to assuring all regulations and customer requirements are met.

- HACCP based Food Safety Controls
- In-bound and out-bound product inspection
- Yearly third-party audit for safe food handling based on stringent international guidelines as recognized by GFSI (Global Food Safety Initiative)
- SQF Certified Distribution Centers
- On-site inspections by USDA
- Robust Traceability Program
- All imported products and domestic shipments are required to have calibrated electronic Time-Temperature monitoring devices

## Supplier Inspections

Our QA & Procurement Personnel performs on-site inspections and food safety audits to our domestic and overseas suppliers. We inspect facilities worldwide and assist these suppliers in bringing their operations into compliance with HACCP and other recognized food safety and quality management programs to include compliance with all U.S. Federal and state requirements such as the Food Safety Modernization Act.

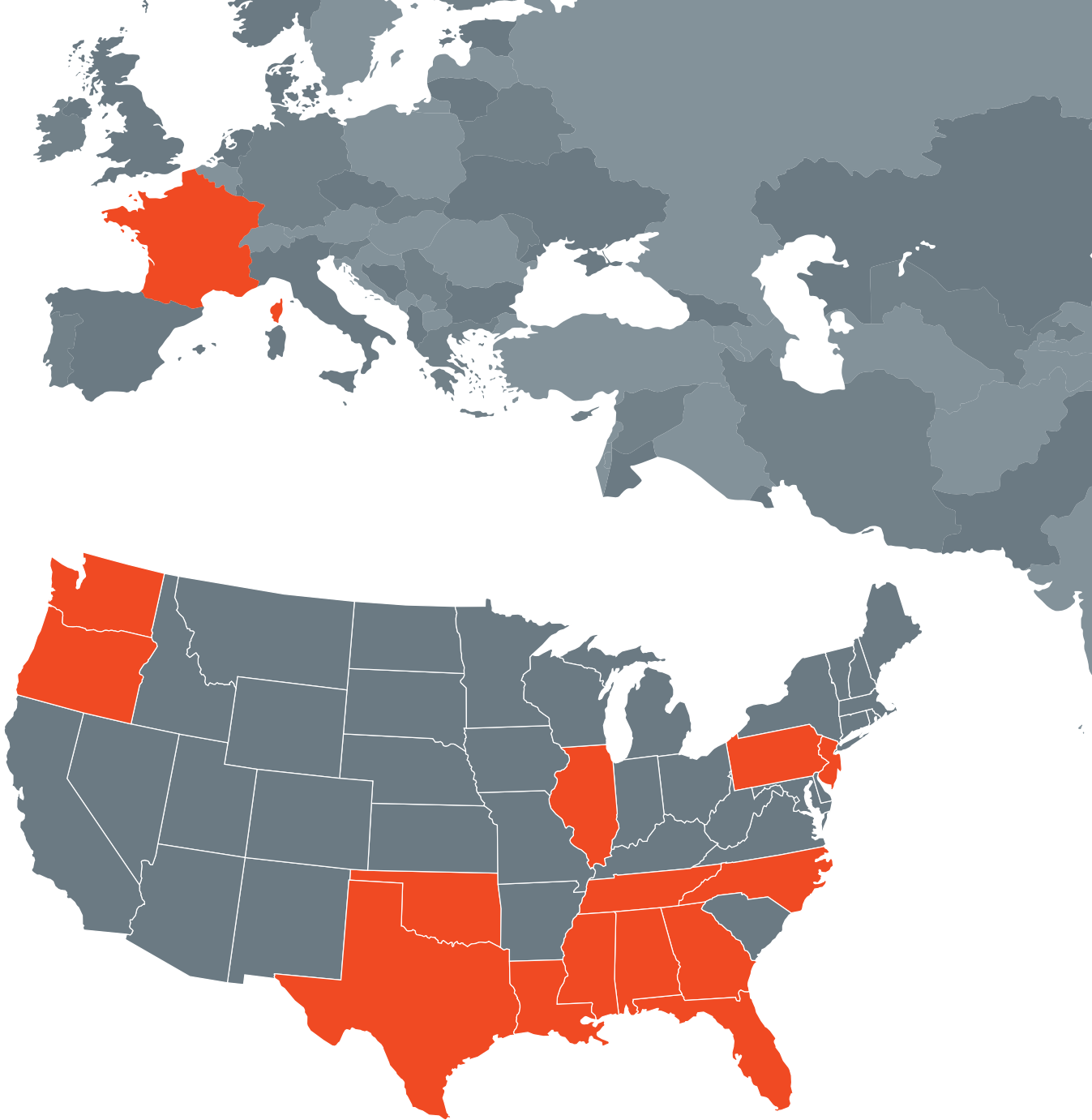




## Export Markets

---

- Mexico
- Guatemala
- Honduras
- Panama
- Costa Rica
- Nicaragua
- Aruba
- Bahamas
- Barbados
- Belize
- Cayman Islands
- Curaçao
- Dominican Republic
- Guyana
- Jamaica
- Antigua and Barbuda
- Dominica
- Grenada
- Saint Kitts and Nevis
- Saint Lucia
- Saint Vincent and the Grenadines
- Sint Maarten
- Suriname
- Trinidad and Tobago
- Turks and Caicos
- Colombia
- Venezuela
- Ecuador
- Peru
- Chile
- Uruguay
- Brazil
- France



## US Distribution

---

### FLORIDA

- Miami
- Coral Gables
- Orlando
- Port Everglades
- Lakeland
- Winter Haven

### GEORGIA

- Atlanta

### N. CAROLINA

- Greensboro

### ALABAMA

- Birmingham

### MISSISSIPPI

- Hattiesburg
- Grenada

### LOUISIANA

- Hammond

### TEXAS

- Dallas
- Houston
- San Antonio

### OKLAHOMA

- Oklahoma City

### TENNESSEE

- Jackson
- Nashville

### NEW JERSEY

- Logan

### PENNSYLVANIA

- King of Prussia

### ILLINOIS

- Chicago

### OREGON

- Clackamas

### WASHINGTON

- Tacoma

### PUERTO RICO

- San Juan



**QUIRCH FOODS, LLC :** MIAMI | ORLANDO | ATLANTA | CHICAGO | GREENSBORO | SAN JUAN  
**COLORADO BOXED BEEF, CO. :** LAKELAND | PORT EVERGLADES | ATLANTA | KING OF PRUSSIA | DALLAS | SAN ANTONIO  
**PREFCO:** HOUSTON | **BUTTS FOODS, LP. :** JACKSON | NASHVILLE | BIRMINGHAM | HATTIESBURG | GRENADA  
**SCARIANO WHOLESALE FOOD DISTRIBUTION:** HAMMOND | **PACIFIC FOOD DISTRIBUTORS:** CLACKAMAS  
**PHOENIX LOGISTICS & COLD STORAGE:** WINTER HAVEN | **HELMSMAN FREIGHT SOLUTIONS | GREAT FISH CO | IQ FOODS**

[www.quirchfoods.com](http://www.quirchfoods.com)